

# PRODUCT BRIEF



## ATS-8CC

### *Cathodic Protection Monitoring Remote Terminal Unit*

Telescada's ATS-8CC is a field proven instrument designed for the real-time monitoring, alarming and data logging of cathodic protection rectifiers and cathodic test points. Its NEMA 4/12 fiberglass enclosure is suitable for wall, post, or telephone pole mounting in outdoor settings.

The ATS-8CC communicates wirelessly to relay up to 4 (four) real-time voltage or current conditions to a central SCADA system. The ATS-8CC automatically reports any out of range conditions, and wirelessly transmits all monitored values for review and analysis.



FIELD PROVEN  
TECHNOLOGY

AC POWERED  
with BATTERY BACK-UP

WIRELESS  
COMMUNICATIONS

■ CDMA 1xRTT ■ GSM/GPRS ■ 900MHz./2.4GHz ISM ■ VHF/UHF Private Radio Networks

### PRODUCT FEATURES

- ✓ Real-Time Alarms via Wireless Modem
- ✓ Up to 4 (four) Isolated Analog Voltage Transducers
- ✓ Up to 4 (four) Status Inputs
- ✓ Electrically Isolated, High Input Impedance
- ✓ Extensive ESD Protection
- ✓ Parameters Configured Locally or Remotely
- ✓ GPS Synchronized Remote Interruption



[www.Telescada.com](http://www.Telescada.com)

35 Corporate Park Drive, Pembroke, MA 02359

TEL: 781-829-9228 FAX: 781-829-975

[www.Telescada.com](http://www.Telescada.com)

# PRODUCT SPECIFICATIONS

## ELECTRONICS

The ATS-8CC is a microprocessor based Remote Terminal Unit (RTU) employing the latest evolving technology in low power circuitry for optimal battery powered operation. The ATS-8CC is AC powered, and backed-up by a trickle charged sealed lead acid battery. The ATS-8CC motherboard is conformally coated for outdoor durability and operational longevity.

- √ Onboard Real-time clock for data log timestamping and time set operations
- √ Nonvolatile memory stores and retains operating parameters
- √ Designed for unattended operation
- √ Optional Local Display

## ANALOG/VOLTAGE INPUTS

The ATS-8CC supports five analog inputs; one is dedicated to constantly monitor battery voltage. Inputs one to four are available for external use. Each input is designed for 0-5vdc. Each analog is electrically isolated, high impedance configuration.

- √ Each input has four remotely configured thresholds with hysteresis (very high, high, low, very low)
- √ Each input is user configured to be critical or non-critical. When a critical threshold is exceeded, the RTU will send an alarm report to the master controller.

## VOLTAGE TRANSDUCER RANGES

The ATS-8CC is typically supplied with 1 to 4 isolated voltage transducers mounted inside the enclosure. Transducers are modular and can be added, or removed to suit the user's needs.

- √ 1500Vrms transformer isolation
- √ ANSI/IEEE C37.91.1 transient protection
- √ Input protected to 240VAC continuous
- √ Rated accuracy +/-0.03% of full scale

Transducer ranges:

-100mV - +100mV	-5V - +5V
-10mV - +10mV	-20V - +20V
-50mV - +50mV	-40V - +40V
-1V - +1V	

## DATA LOGGING AND REPORTING

In its typical configuration the ATS-8CC uploads its recorded data on a daily basis to the master controller. The ATS-8CC stores up to 26,000 values.

- √ 1 to 4 analog channel recording.
- √ Analog sampling rate selectable: 5, 15, 20, 30 or 60 second intervals.
- √ Analog data recording rate selectable: 1, 5, 15, 30 or 60 minute intervals.
- √ Local alarm log maintains the most current 25 alarm records with date and time stamp. Alarm logs can be retrieved on demand.



## COMMUNICATIONS & PROTOCOLS

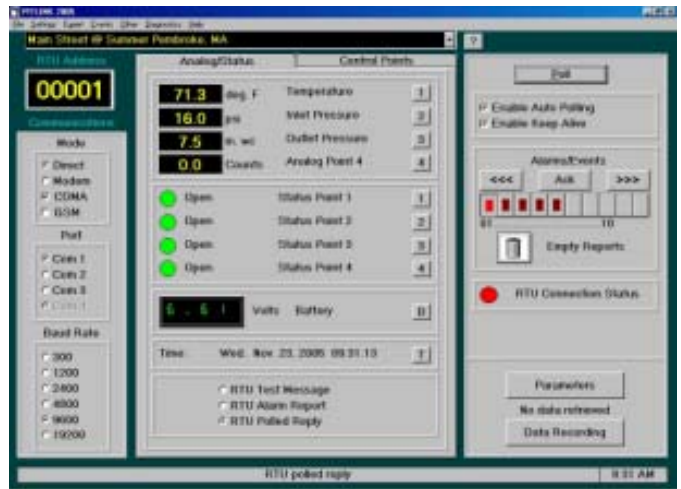
The ATS-8CC has two communications ports, and can be configured to use a variety of communications mediums and protocols.

- √ The local port provides an RS-232 connection a laptop or field computer.
- √ The modem port provides an RS-232 connection to a modem for wireless communication with the master controller.
- √ Internal low power cellular modem or radio transceiver options.

CDMA 2000 1xRTT  
GSM/GPRS  
VHF/UHF Private Radio Networks  
900MHz, 2.4GHz ISM  
Dial-Up Landline Modem  
Custom Designed Communications

- √ Telescada, DNP3 and Custom Protocol Options

The Telescada T-Link software utility provides local configuration, calibration and data retrieval for a network of Telescada RTUs



## MECHANICAL & ENVIRONMENTAL

The ATS-8CC is designed for outdoor use and is housed in a NEMA 4/12 UV resistant fiberglass reinforced plastic enclosure.

- √ Temperature - -40C to +85C
- √ Humidity - 5% -to 95% non-condensing
- √ Dimensions - 15.50"H x 13.00"W x 6.50"D
- √ Wall, Telephone Pole or Pipe Mount Installation
- √ Weight - approximately 35 pounds with battery

35 Corporate Park Drive, Pembroke, MA 02359  
TEL: 781-829-9228 FAX: 781-829-975

[www.Telescada.com](http://www.Telescada.com)