

PRODUCT BRIEF



ATS-8CF

Gas Distribution Monitoring Remote Terminal Unit

Telescada's ATS-8CF is a field proven instrument designed for the real-time monitoring, alarming and data logging of natural gas distribution pressure, gas flow, and/or gas temperature. Its NEMA 4 plastic reinforced fiberglass enclosure makes it ideally packaged for gate station or field locations.

The ATS-8CF communicates wirelessly to relay up to 4 (four) real-time pressure, flow or temperature conditions to a central SCADA system. The ATS-8CF automatically reports any out of range conditions, and wirelessly transmits all monitored values for review and analysis.



FIELD PROVEN
TECHNOLOGY

BATTERY POWERED
with SOLAR CHARGER

WIRELESS
COMMUNICATIONS

■ CDMA 1xRTT ■ GSM/GPRS ■ 900MHz./2.4GHz ISM ■ VHF/UHF Private Radio Networks

PRODUCT FEATURES

- ✓ Real-Time Alarms via Wireless Modem
- ✓ Up to 4 (four) Analog Pressure, Flow or Temperature Transducers or Transmitters
- ✓ Long Life Sealed Rechargeable Battery
- ✓ Parameters Configured Locally or Remotely
- ✓ User Configured Pressure Sampling Intervals
- ✓ User Configured Pressure Recording Intervals
- ✓ Multiple Protocol Support



www.Telescada.com

35 Corporate Park Drive, Pembroke, MA 02359

TEL: 781-829-9228 FAX: 781-829-975

www.Telescada.com

PRODUCT SPECIFICATIONS

ELECTRONICS

The ATS-8CF is a microprocessor based Remote Terminal Unit (RTU) employing the latest evolving technology in low power circuitry for optimal battery powered operation. The ATS-8CF is powered by a sealed lead acid battery trickle charged by an external solar panel. The ATS-8CF motherboard is conformally coated for outdoor durability and operational longevity.

- ✓ Onboard Real-time clock for data log timestamping and time set operations
- ✓ Nonvolatile memory stores and retains operating parameters
- ✓ Designed for unattended operation
- ✓ Optional Local Display

PRESSURE/VOLTAGE ANALOG INPUTS

The ATS-8CF supports five analog inputs; one is dedicated to constantly monitor battery voltage. Inputs one to four are available for external use. Each input is designed for 0-5vdc. Typically transducers monitor gas pressure, flow and/or temperature.

- ✓ Each input has four remotely configured thresholds with hysteresis (very high, high, low, very low)
- ✓ Each input is user configured to be critical or non-critical. When a critical threshold is exceeded, the RTU will send an alarm report to the master controller.

GAS PRESSURE TRANSDUCER RANGES

The ATS-8CF is typically supplied with intrinsically safe, inlet and outlet, stainless steel industrial pressure transducers. Transducer rated accuracy is +/-0.25% of full scale. Transducer ranges:

0-30 inH2O Column	0-50 psig
0-60inH2O Column	0-100 psig
0-5 psig	0-200 psig
0-10 psig	0-500 psig
0-25 psig	0-1000 psig

Optional  plumbing for local calibration

DATA LOGGING AND REPORTING

In its typical configuration the ATS-8CF uploads its recorded data on a daily basis to the master controller. The ATS-8CF stores up to 26,000 values.

- ✓ 1 to 4 analog channel recording.
- ✓ Analog sampling rate selectable: 5,15, 20, 30 or 60 second intervals.
- ✓ Analog data recording rate selectable: 1, 5, 15, 30 or 60 minute intervals.
- ✓ Local alarm log maintains the most current 25 alarm records with date and time stamp. Alarm logs can be retrieved on demand.



COMMUNICATIONS & PROTOCOLS

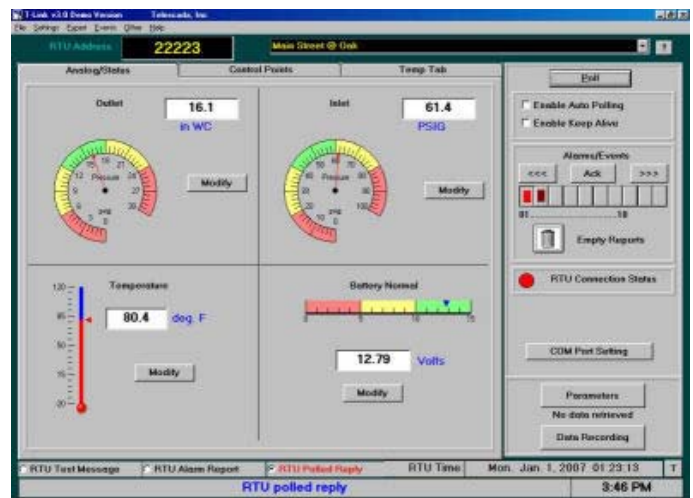
The ATS-8CF has two communications ports, and can be configured to use a variety of communications mediums and protocols.

- ✓ The local port provides an RS-232 connection a laptop or field computer.
- ✓ The modem port provides an RS-232 connection to a modem for wireless communication with the master controller.
- ✓ Internal low power cellular modem or radio transceiver options.

CDMA 2000 1xRTT
GSM/GPRS
VHF/UHF Private Radio Networks
900MHz, 2.4GHz ISM
Mixed Network Communications
Custom Designed Communications

- ✓ Telescada, Modbus, DNP3 Protocol Options

The Telescada T-Link software utility provides local configuration, calibration and data retrieval for a network of Telescada RTUs



MECHANICAL & ENVIRONMENTAL

The ATS-8CF is designed for outdoor use and is housed in a NEMA 4 plastic reinforced fiberglass enclosure..

- ✓ Class 1, Division 2, Groups C & D
- ✓ Temperature - -40C to +60C
- ✓ Humidity - 5% -to 95% non-condensing
- ✓ Dimensions - 20.00"H x 14.00"W x 7.00"D
- ✓ Custom enclosure colors available
- ✓ Vent Pipe, Wall, or Pipe Mount Installation
- ✓ Weight - approximately 30 pounds with battery

35 Corporate Park Drive, Pembroke, MA 02359
TEL: 781-829-9228 FAX: 781-829-975

www.Telescada.com