

PRODUCT BRIEF



Drive-By Wireless Link

Telescada's DWL "Drive-By Wireless Link" is a safe, non-intrusive way to interrogate, download data and configure any Telescada RTU.

Replacing the conventional RS-232 programming cable, the DWL permits technicians to remain safely in their service vehicle to perform most local service tasks.

The DWL operates on the licence free 2.4GHz ISM band. With no licence requirements or fees, the DWL is free from monthly service or operational charges.

**SAFE
ACCESS**

**LICENCE FREE
WIRELESS**

**LOCAL
INTERROGATION**

PRODUCT FEATURES

- ✓ Safe, Non-Intrusive Wireless Interrogation
- ✓ Very Low Power Consumption
- ✓ Always On
- ✓ No License Fees, No Monthly Charges
- ✓ Greater Than 300 Foot Range
- ✓ Line of Sight Not Required
- ✓ 128 Bit AES Encryption



DWL-232 Installed in The Telescada T-Corder Electronic Chart Recorder



www.Telescada.com

35 Corporate Park Drive, Pembroke, MA 02359

TEL: 781-829-9228 FAX: 781-829-975

www.Telescada.com

PRODUCT SPECIFICATIONS

PERFORMANCE

The DWL wireless link modem operates on 2.4GHz ISM band using the 802.15.4 ZigBee protocol. It is designed to provide moderate distance RS-232 wireless connectivity with any Telescada RTUs in your network having a DWL modem.

- √ Indoor/Urban Range - up to 300 feet (100m)
- √ Outdoor Line of Sight Range - up to 1mile (1.6km)
- √ Transmit Power - 100mW (20 dBm) EIRP
- √ Receiver Sensitivity - -100dBm
- √ Data Rate - Configured to RTU
- √ RPSMA Antenna

NETWORKING & SECURITY

The DWL wireless link modem operates on 2.4GHz ISM band using the 802.15.4 ZigBee protocol .

- √ Frequency Range - ISM 2.4GHz
- √ Spread Spectrum - DSSS
- √ Modulation - OQPSK
- √ Network Topology - Peer to Peer/ Point to Point
- √ Channels - 12 Direct Sequence Channels
- √ Filtration Options - PAN ID, Channel & Destination/ Source Address
- √ Addressable for 65,000 units on each channel
- √ 128 Bit (AES) Encryption

POWER & OPERATION MODE

The DWL wireless link modem is configured for low power operation and is ideal for Telescada battery operated, solar powered systems. The DWL powers up from sleep mode every 10 seconds and looks for a receiving signal from the RTU for 100ms. If it finds the correctly addressed RTU, it makes contact and stays powered up allowing wireless interrogation.

- √ Supply Voltage - 5-12VDC
- √ Tx Current - 300mA
- √ Rx Current - 80mA
- √ Sleep Current - < 6mA

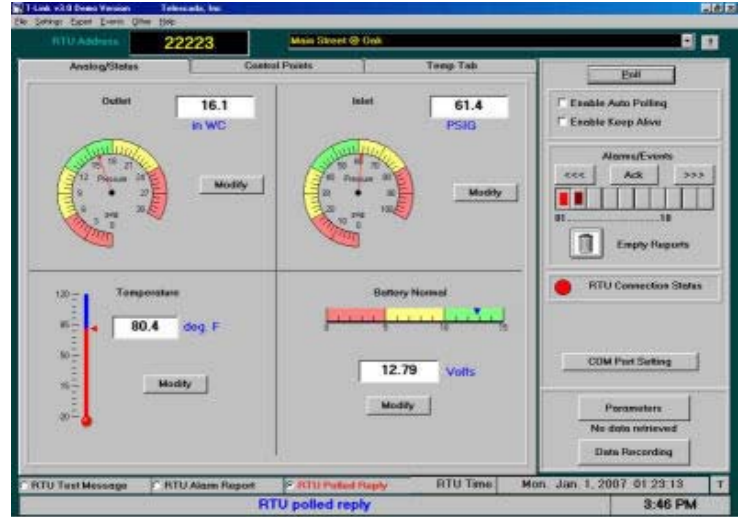
MECHANICAL & ENVIRONMENTAL

The DWL is designed for installation in any Telescada RTU enclosure .

- √ Class 1, Division 2
- √ FCC Part 15.247, Industry Canada, EC Certifications
- √ Temperature - -40C to +80C * RS-232 RTU Modem
- √ Temperature - 0C to +70C * USB Laptop Modem
- √ Humidity - 5% -to 95% non-condensing
- √ Dimensions - 4.500" x 2.750" x 1.125"
- √ Weight - 5.25 oz (150g)



The DWL provides direct wireless connection to a PC running Telescada's T-Link software utility for local configuration, calibration and data retrieval of Telescada RTUs



The DWL-232 quickly installs in any Telescada RTU by connecting to the RTU local Port



The DWL-USB Provides Connectivity to the Laptop and Power from the Laptop via its USB Connector



www.Telescada.com

35 Corporate Park Drive, Pembroke, MA 02359
TEL: 781-829-9228 FAX: 781-829-975

www.Telescada.com