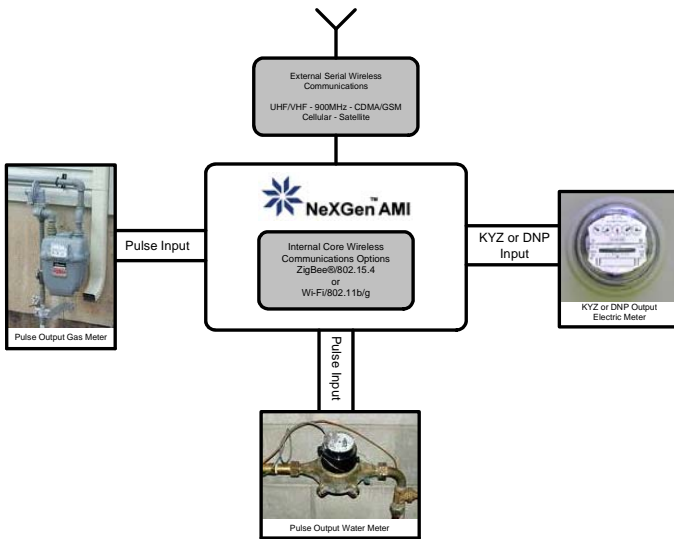


Advanced Metering Solutions From Telescada

NeXGen™ AMI



PRODUCT BRIEF

The Telescada NeXGen™ AMI “Triple Input” Wireless Advanced Metering Infrastructure device is a powerful, flexible and economical solution for 2-Way wireless, automatic meter reading, status monitoring, alarming and control. Built upon a modular framework, the NeXGen™ AMI provides triple input capability for the monitoring, recording and control of remote electric, gas and water services through a single instrument.

The NeXGen™ AMI provides users with a core of 3 independent sets of KYZ and differential pulse accumulators for data collection and recording of conventional pulse output meters. The NeXGen™ AMI can also transmit data from an IED (intelligent electronic device), or a DNP smart meter via its RS-232 serial communications link.

The NeXGen™ AMI includes an integrated momentary “Form C” (SPDT) control relay rated for 30A at 250 VAC, 20A at 28 VDC for remotely actuated load control or remote disconnect.

An internal ZigBee®/802.15.4 meshing spread spectrum or Wi-Fi/802.11b/g tranceiver allows the NeXGen™ AMI to transmit meter data to a central data concentrator. An additional remote communication port allows for configured remote data transmission via higher power radio, dial-up, cellular or other tranceiver. A local maintenance port allows for direct interrogation and programming of the NeXGen™ AMI using the NeXGen™ NGC Maintenance Utility Software.

DNP3.0 standard communications protocol allows the NeXGen™ AMI to communicate with any modern SCADA system.

■ Meter Inputs

- 1 (one) Optically Isolated Digital Input Set configured for KYZ Pulse Accumulation
- 2 (two) Optically Isolated Digital Input Sets configured for Differential Pulse Accumulation
- RS-232 IED “Smart Meter” Input
- Data Recording on All Inputs

■ Control Relay

- 1 (one) Form C (SPDT)
- Rating, 30A at 250 VAC, 20A at 28 VDC
- Configured as timed, momentary or latching

■ Communications

- Internal ZigBee®/802.15.4 2.4 GHz , 50 mW (+17 dBm) meshing tranceiver
- Internal Wi-Fi/802.11b/g tranceiver
- 1 (one) RS-232 Remote Communication Port
- 1 (one) RS-232 Shared Local Port
- DNP3.0 Protocol Standard

■ Power Supply & Physical Form Factor

- 120, 240, 480 VAC Input Options
- 7.5 x 6.0 x 3.0” NEMA 4X Enclosure

■ Environmental

- Operating Temperature range: -40° to +80°C
- Humidity: 93% non-condensing at 55°C

Monitor, Alarm, Record, Communicate and Control

www.Telescada.com

©2010 Telescada. All rights reserved.



35 Corporate Park Drive
Pembroke, Massachusetts, USA
TEL: 781-829-9228 FAX: 781-829-9875
info.desk@telescada.com