

PRODUCT BRIEF



Portable Electronic Chart Recorder

Telescada's T-Corder Electronic Chart Recorder is designed for portability and use where data logging of natural gas distribution pressure, and/or gas flow is desired. It is an ideal instrument to replace old style circular paper chart recorders for the collection, archiving and future retrieval of gas distribution regulatory and hydraulic engineering data.

Telescada's T-Link Software Utility Uploads the T-Corder's stored data for presentation and manipulation in database form for rapid interpretation, analysis, graphing and archiving.



**LOW
COST**

**FIELD PROVEN
TECHNOLOGY**

**BATTERY
POWERED**

PRODUCT FEATURES

- ✓ 1 or 2 Intrinsically Safe Pressure Transducers
- ✓ 1 or 2 Flow Transmitters
- ✓ User Configurable Sampling Intervals
- ✓ User Configurable Recording Intervals
- ✓ Environmentally Friendly Long Life Sealed Lead Acid Rechargeable Battery



35 Corporate Park Drive, Pembroke, MA 02359

TEL: 781-829-9228 FAX: 781-829-975

www.Telescada.com

PRODUCT SPECIFICATIONS

ELECTRONICS

The T-Corder is a microprocessor based Remote Terminal Unit (RTU) employing the latest evolving technology in low power circuitry for optimal battery powered operation. The T-Corder is powered by a removable sealed lead acid rechargeable battery. The T-Corder motherboard is conformally coated for outdoor durability and operational longevity.

- ✓ Onboard Real-time clock for data log timestamping and time set operations
- ✓ Nonvolatile memory stores and retains operating parameters
- ✓ Designed for unattended operation

PRESSURE ANALOG INPUTS

The T-Corder supports five analog inputs; one is dedicated to constantly monitor battery voltage. Inputs one to four are available for external use. Each input is designed for 0-5vdc. Typically transducers monitor gas pressure, temperature and/or flow.

- ✓ Each input has four remotely configurable thresholds with hysteresis (very high, high, low, very low)
- ✓ Each input is user configurable to be critical or non-critical. When a critical threshold is exceeded, the RTU will send an alarm report to the alarm log.

GAS PRESSURE TRANSDUCER RANGES

The T-Corder is typically supplied with one or two intrinsically safe, stainless steel industrial pressure transducers. Transducer rated accuracy is +/-0.25% of full scale. Transducer ranges:

0-30 inH2O Column	0-100 psig
0-60inH2O Column	0-200 psig
0-5 psig	0-500 psig
0-10 psig	0-1000 psig
0-25 psig	0-2500psig
0-50psig	0-5000 psig

GAS FLOW TRANSMITTER RANGES

The T-Corder is typically supplied with one or two gas flow transmitters. Transmitters measure flow rate up to 315,000 SCFH. Transmitter rated accuracy is 98% @ 120,000 SCFH.

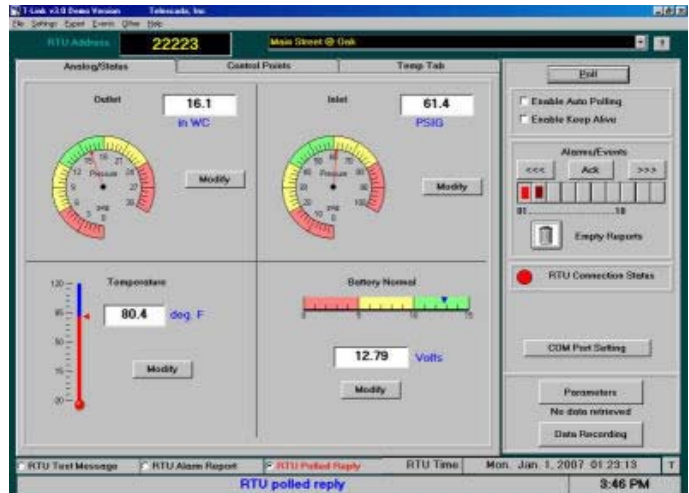
DATA LOGGING AND REPORTING

In its typical configuration the T-Corder stores its recorded data for direct uploading to Telescada's T-Link Software Utility. The T-Corder stores up to 26,000 values.

- ✓ 1 to 4 analog channel recording.
- ✓ Analog sampling rate selectable: 5,15, 20, 30 or 60 second intervals.
- ✓ Analog data recording rate selectable: 1, 5, 15, 30 or 60 minute intervals.
- ✓ Local alarm log maintains the most current 25 alarm records with date and time stamp. Alarm logs can be retrieved on demand.



The Telescada T-Link software utility provides local configuration, calibration and data retrieval for a network of Telescada RTUs



MECHANICAL & ENVIRONMENTAL

The T-Corder is designed for outdoor use and is housed in a NEMA 4/12 high impact strength, UV resistant fiberglass reinforced enclosure.

- ✓ Class 1, Division 2, Groups C & D
- ✓ Temperature - -40C to +60C
- ✓ Humidity - 5% -to 95% non-condensing
- ✓ Dimensions - 13.00"H x 11.00"W x 5.00"D
- ✓ Rubber Feet and Carry Handle for Portability
- ✓ Vent Pipe, Wall, Pipe Mount or Ground Installation
- ✓ Weight - approximately 20 pounds with battery



35 Corporate Park Drive, Pembroke, MA 02359
TEL: 781-829-9228 FAX: 781-829-975
www.Telescada.com